



Chalet La Fedora

★ ★ ★ ★
Mountain Cosy
Apartments



S

Oisans
BIENVENUE DANS LES ALPES

VAUJANY
1300m 2010m 2300m
Chalet village

Alpe d'Huez
grand domaine Vtt
LES PLUS GRANDES CROISSANTES DE LA MONTAGNE
AFTER SKI, RANDONNÉE À PIED, VTT, CANIC, PISCINE
TOUTES LES ACTIVITÉS SONT OFFERTES EN FONCTION DE LA SAISON

Fouine apartment

6/8 people – 70 m² – 754 ft² - 3 bedrooms

This apartment is fully equipped for 6-8 people, with 3 bedrooms (one with 2 bunk beds), a kitchen open to the dining room, living room, fireplace and balcony / terrace south facing.

You will be charmed by the amazing view on the Eau d'Olle valley, the cascade of La Fare and the Massif des Grandes Rousses.

The Chalet

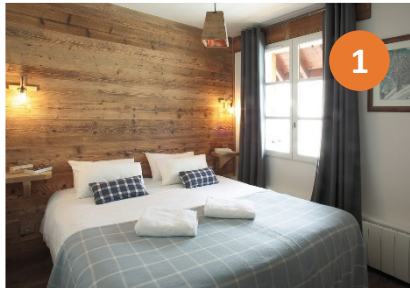
His name comes from his XVIII century owner : the Fairy Dora. This chalet is situated in the heart of the village and make part of its history. They all have now the comfort and equipment you need in order to spend a nice stay. Access to "Spa de La Perle" far from 50m and composed with Hammam, Sauna, beauty institute and body care. The chalet is surrounded by a large private park with mini -golf, ponies, games and shacks for children, barbecue, sunbathings, etc ...



S



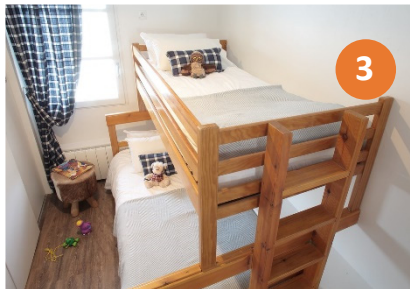
S



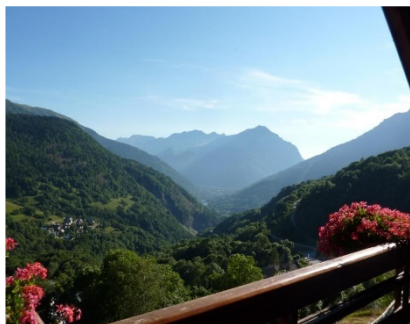
1



2

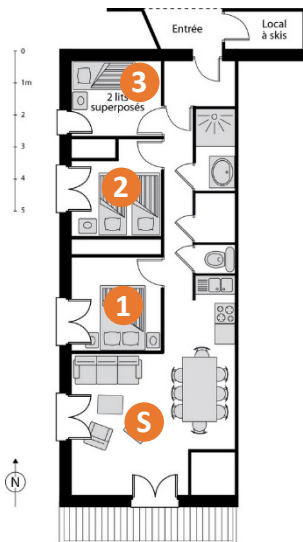


3



Included services

- Beds made up with comfortable duvet
- Large bath towels
- Cleaning pack (washing liquid, household product, sponges, tea towels...)
- Cot and highchair
- Free wifi access
- TV / Satellite chains
- Washing machine and dryer
- Free parking in front of the chalet
- Closed private bike park



Fouine apartment

Surface	70m ² - 754 ft ²
Capacity	6/8 People
Bedrooms	3
Beds	4 singles or 2 doubles plus 2 bunk beds
Sofa bed	1 for 2 people
Fire place	1
Equipped Balcony/terrace	12 m ² - 130 ft ²
Floor	2nd by Walk-in

Optional Services

- SPA de La Perle
- Private Shuttle
- Croissants and fresh bread in the morning
- French Breakfasts
- Special dinners for athletes
- End Cleaning Pack
- Apart'Hotel
- Route Cycle and VTT hire